

# QuiltLine

Oct 2009 · Charlotte Quilters' Guild Newsletter · Vol 33 Issue 4  
<http://www.charlottequiltersguild.org>

## Programs & Workshops

**L = Lecture W = Workshop**

Workshop Hours: 9 am to 4 pm  
with one hour for lunch

### October

Rami Kim

Oct. 7: L-Folded Fabric Elegance

Oct. 8: W-The Fifth Dimension

There are two spaces left for Rami's workshop. If interested, call or email Pat Sears at 803 547-8206 or [Sears6584@aol.com](mailto:Sears6584@aol.com).  
[www.ramikim.com](http://www.ramikim.com).

The supply list is available from the Program Chair. This workshop will be intriguing to learn Rami's fabric folding techniques. There is a sample for this workshop.

**WANTED:** *Members are still needed to model Rami's beautiful garments – sizes 8 thru 14. Here is your opportunity to participate with our lecturer. Please see Pat at the meeting.*

### November

The No Hop Shop Hop

We have a full house for our shop hop. Thirteen shops will be here to wet our quilting appetites with all kinds of quilting supplies, such as fabric, patterns, threads, plus much more. So here is your chance to shop all in one place!!

Save your dollars, bring your credit cards, use your money set aside for "just quilting." Let's show the shops that we appreciate their efforts in coming to us with their beautiful and useful quilting supplies.

It is going to be FUN!!!



### GENERAL MEETING

**DATE:** Wednesday, Oct 7, 2008

**TIME:** 6:30 pm

**PLACE:** Avondale Presbyterian  
Church  
2821 Park Road  
Charlotte, NC 28209

### AGENDA

6:30 Doors Open

7:00 General Meeting  
Announcements

8:00 Program

### BOARD MEETING

**DATE:** Oct 14, 2008

**TIME:** 6 pm

**PLACE:** Charlotte House

### PROGRAMS & WORKSHOPS AT A GLANCE

10/7 Rami Kim

10/8 Workshop

11/4 No Hop Shop Hop

12/2 Holiday Potluck Dinner plus  
Special Project

## 2009 ~ 2010 Officers and Committee Chairs

**President**  
Kim Profitt

**President-Elect**  
Nadine Bucek

**Secretary/Historian**  
Debbie Rieck

**Treasurer**  
Rena Hefley

**Community Education**  
Deb McConighy & Cary Caldwell

**Membership Chair**  
Alice Earl  
Linda Sirota

**Sunshine**  
Mary Quartapella

**Hospitality**  
Pat Hopkins

**Librarian**  
Gail Toliver

**Bee Keeper**  
Pat Hopkins

**Database**  
Mary Ann Fogleman

**Newsletter**  
Karen Ponischil

**Outreach**  
Loretta Kelley

**Programs/Workshops 09/10**  
Pat Sears

**Programs/Workshops 10/11**  
Nancy Osterburg

**Block of the Month**  
Marilyn Gore

**Publicity**

**Website Maintenance**  
Elaine Dickson

**Symposium 2010**  
Marilyn Gore  
Grace Howes  
Patti Hayden

## President's Message ~ Kim Profitt

It's difficult to believe that it's already September. School has started, much to the relief of parents and much to the chagrin of teachers. Actually, that's not true. I used to teach fifth graders in a private school near the Virginia border of North Carolina. The anticipation of the new year, new students and new challenges was always exciting for me. It wasn't until February and March that the year began to tax my energy.

And the Guild presidency is no different for me. ('course, I haven't come to February and March yet...so it's too soon to tell...) September seems to be the beginning of the new year. Our Board is continuing to impress me with their fresh ideas and also their willingness to cherish traditions. You will be seeing some of these new technological ideas in use at the October membership meeting, assisting us in bringing a true meeting back into existence. You'll be hearing a report from each of the board members and committee chairs while having visuals provided by our new in-focus projector. Elaine Dickson and Deb McConaghy are creating a Power Point presentation for each month's meeting. I'm disappointed because I won't be at this meeting to see the wonders of science. Instead, I'll be in Houston, TX visiting my family and enjoying a few days before Fall Market. I rarely see my family, so I'm excited about this trip. I hope to hear rave reviews when I return!

On a sad note, Nadine Bucek submitted her resignation as President Elect a few weeks ago. She is sorry to have to do this, and she also won't be making membership meetings because of personal reasons. She wants to thank everyone who made her feel welcome in the Guild. I have put out a few feelers to fill this position and have a couple of well qualified, enthusiastic, people interested. If anyone is interested in the President Elect position in our Guild, please contact me at [kim@thequiltingnook.com](mailto:kim@thequiltingnook.com) before October's Board meeting (2nd Wednesday in October).

It sounds like Symposium planning is running full tilt and hopefully we'll get a membership update very soon. (Maybe at the October meeting!) I know that many of you are new to the Guild or haven't had any experience with Symposium and don't really know what it involves. From what the board has heard, we're going to have WONDERFUL teachers in for classes during Symposium, along with evening activities and special events. Registration begins in January and many people have already sent in a small fee to get the catalog as soon as it is released.

Now that Summer is over and the temperatures are beginning to cool down, many of us are out canvassing the quilt shops for that "just perfect" project for the Fall. In your excitement of working on your new project (or finishing an old one) don't forget to make the Guild a high priority. The Board and I are working hard to make your experience better and keep you better informed.

Happy quilting!

Kim

## QuiltLine

QuiltLine is published monthly by the Charlotte Quilters' Guild.

P. O. Box 221035  
Charlotte, NC 28222

Email the editor at:  
[karen@moonlightcreativegroup.com](mailto:karen@moonlightcreativegroup.com)

Advertisement Rates per Issue:  
Business Cards \$7 • 1/4 Page \$15  
1/2 Page \$20 • Full Page \$40

Submissions may be edited for brevity and clarity. Please contact Karen Ponischil, editor, if you would like to submit an article, place an advertisement, or suggest improvements. Article and advertisement deadline is the second Wednesday of the month. Send submissions by email to [karen@MoonlightCreativeGoup.com](mailto:karen@MoonlightCreativeGoup.com). and in subject line put **Charlotte Quilters' Guild**.

# • • • • • CQG Board Meeting Minutes • • • • •

Wednesday, Sept 9, 2009 at 6 p.m.

Attendance: Loretta Kelly, Deb McConaghy, Carrie Caldwell, Alice Earl, Rena Hefley, Elaine Dickson, Pat Sears, Kimberly Profitt, Grace Howes

President Kimberly Profitt welcomed everyone to the board meeting and called the meeting to order at 6 pm. Quorum was established. Because Debbie Reick had prior commitments and no substitute secretary could be found, Kim took notes of the meeting.

**Outreach:** Loretta Kelly reported that the fees for the Outreach storage unit run \$25 per month. She and Rena will take care of paying that fee.

At the September general meeting, 27 quilts were submitted to Cuddle Quilts and 10 people brought school supplies for Outreach.

The doll raffle went well during the meeting with all expenses met through these sales. The raffle will take place at the December meeting with sales continuing at each meeting until then. Each meeting they will feature a new outfit for the doll to entice further participation.

The membership will be asked to bring any dental care products to the October meeting to use in the bags for the Battered Women's Shelter.

**Treasurer's Report:** Rena Hefley gave the Treasurer's report (see attached).

**Programs:** Pat Sears reported that Barbara Olson's workshops were a success. She had 13 attend the two day workshop on Thursday and Friday and 24 attended Saturday's one day workshop. Because of this participation, much of Barbara's costs were defrayed.

She has 23 signed up for the Rami Kim workshop with a couple of spots still available as of the Board meeting. People are already signing up for workshops that will be held after the first of the year. Pat requested the Board to purchase a telescoping quilt stand to show the teachers' quilts during workshops and also the purchase of more receptacles for electrical cords. The Board discussed these purchases and asked Pat to look into the cost of a quilt stand to be reported at the next Board meeting. The purchase of 4 more receptacles was moved by Pat Sears and Seconded by Alice Earl. This purchase was approved by the Board. Pat expressed the need for a write up about

December's workshop from the Symposium committee so that she may garner interest. Pat reported that she has not heard of any grant winner from the grant committee as of this date.

Pat will also confirm the co-chairs for Programs for the next year and report at the next meeting.

**Website:** Computer guru Elaine, reported that she's continuing to work on the Guild website and that Kathy Korzan is working on the Symposium site.

**Community Education:** Deb McConaghy and Carrie Caldwell reported that they have created a calendar for the 2009/10 raffle quilt and know where they will be taking the quilt as far as major events are concerned. They also reported that The Quilting Nook will showcase the raffle quilt during the month of February, but need to have the other shops sign up for a time to take the quilt. They have also put together a sign out sheet for the quilt so that they will always know where it is located.

Deb expressed the need for a "pool" of people willing to sell raffle tickets at different events. Just by expressing their willingness to help out with this task does not mean they'll be tapped for every event. Carrie said that the pin sale has been going well and they will begin selling bags for \$10. It was also decided that the Guild will give some of the bags to Outreach as prizes for bringing in supplies for Outreach.

The 2010/11 Raffle Quilt meeting will be on September 16 and they are getting ready to purchase fabric. They are excited about asking the membership to participate in creating this quilt and are happy to be on schedule with their timeline for the quilt.

**Membership:** Alice Earl reported there were 108 members, 9 new members and 6 guests at the September meeting. Membership had 57 renewals and 9 new memberships paid with a total of 154 memberships paid. Alice reminded everyone that memberships must be paid by the October meeting in order to have your name listed in the membership book. Alice reported that she has taken the Library cart as her personal quest this year. She is looking for a library cart with shelves that will show off our library in a much more organized fashion. She is hoping to find a cart that may be locked when it is not in use. She will return to the Board with a proposal on costs.

**Symposium:** Grace Howes attended the Board meeting as the Symposium representative this month. She reported that they have 22 teachers with 19 contracts signed and returned to the committee. She also stated that just under 200 people have sent in their \$4 check to get the catalog prior to registration. Registration will occur in January 2010. It was reported that Kathy Korzan is working on the web site for Symposium. And it was also reported that the Symposium committee is looking into sewing machine rentals for the convenience of students.

**Old Business:** Kim and Rena presented the 2009/10 budget and after discussion, Pat Sears moved to accept the budget as presented. Rena Hefley seconded that motion and it was approved by the Board.

**New Business:** Kim expressed sorrow at accepting Nadine Bucek's need to resign as President Elect for personal reasons. She will be sorely missed and we hope that she will be able to participate in the Guild in the future. It was stated that the hunt for a new President Elect will begin immediately. Elaine Dickson brought up the idea of using Power Point and our new infocus projector to create a visual presentation during the meeting portion of our general membership meetings. Deb McConaghy agreed to help Elaine with setting up this presentation and having it ready to use at the October meeting.

Kim asked Alice Earl to preside over the October membership meeting since she will be out of town and there is no President Elect to take over the meeting. Alice agreed to do so. It was also brought up that Pat Hopkins, Hospitality Chair, will take over the greeting of the guests and new members at the meetings because she has that information and has had the opportunity to meet them prior to the meeting. With no further discussion, Alice Earl moved to adjourn the Board meeting and Carrie Caldwell seconded that motion. The September 9 Board meeting adjourned at 7 pm.

# CQG General Meeting Minutes

**Wednesday, Sept 25, 2009 at 7 p.m.**

The Meeting was called to order at 7 pm by President, Kim Profit.

**Announcement:** Iraqi Bundles of Love packages need to be mailed by Sept. 7th. No books, notions only please.

**Outreach Committee:** Loretta Kelley - next month will be Dental Month.

Please bring a donation of toothpaste, toothbrushes, etc. Cuddle quilts will hold a workshop on Sept. 29th at Quilt Patch Fabrics, from 10 am to 2 pm. Please bring your mat, rotary cutter and 6 X 24 ruler, no sewing machines.

Outreach is also selling raffle tickets for a doll, trunk, and doll clothes. More doll clothes will be added each month. Drawing will be in December. Tickets are \$1 each, 6 for \$5. Donna Leamy and Judith Hoxie, won \$10 gift cards to Quilt Patch Fabrics. Quilts for Troops, Cindy Janhke, reported that several quilts and quilt tops were made at the

last workshop. The next workshop will Sept. 12th at The Quilting Nook. Cindy asked for volunteers to quilt some of the tops that were made at the last workshop.

**Membership:** Alice Earl, reported many membership renewals. New membership cards and directories will be available in November.

**Beekeeper:** Pat Hopkins, has a table for sign ups if you are interested in joining a new bee. She also needs a hostess for 8 new members.

**Block of the Month:** Marilyn Gore, has samples for three months. Jacob's Ladder, Monkey Wrench, and Shoofly. Make 2 of each block, one to keep and one to bring to the next meeting. Community Education, Deb McConaghy, needs small quilts to display on Sept. 18th, also someone

to give a short talk on quilting. Also needs volunteers to sell raffle tickets on October 31st at Mooresville.

**Programs:** Pat Sears, 2 slots available in Rami Kim's October workshop. Please pay the workshop fee when you sign up, or your space is not reserved. Claudia Reynolds would like guild members to volunteer at the Charlotte Museum of History, November 1st. Mardelle Smith, please contact her if you are interested in attending Myrtle Beach Quilt Party.

**Show and Tell:** had 13 participants. There were lots of quilts shown, along with several bags, pillows and placemats.

*I cannot count my day complete  
'til needle, thread and fabric meet.  
-unknown*

# Programs & Workshops continued

## December

Holiday Potluck Dinner and Symposium Special Project

Our program for December is a bit different, but will be rewarding. We will have a workshop to help make the handmade gifts for Symposium. We will be like Santa's helpers: cutting, quilting, and maybe even sewing on the notebook holders. Next month, I will have more details as to how many cutting mats, rotary cutters, etc. we will need. It is our aim to get as many members as possible involved in this project. Oh, and there will be a prize or two given out every few minutes, so come and join in the fun!

## 2010

## January

Grant Winner

## February

Laura Wasilowski

2/3: L-I Quilt, Therefore, I Am

2/4 W-Garden of Eden (art quilt collage of flowers)

Create a blooming garden on a green base of lush leaves, curly ferns, and wavy blades of grass—all are free form and from colorful fused fabrics. Check out Laura's book Fusing Fun!: Fast Fearless Art Quilts.

[www.artfabrik.com](http://www.artfabrik.com)

*Sign up Cut-off is December 31, 2009*

## March

Margaret Miller

3/3: L-Looking Ahead...with Margaret Miller

3/4: W-Samplin' AnglePlay: New Blocks with Fresh Angles

This workshop is based on Margaret's books AnglePlay Blocks and the new Stunning AnglePlay with templates for rotary cutting the elongated (half rectangle) triangle shape. Sound interesting?

Margaret's workshop is filling up fast so do not wait to sign up if you are seriously considering taking it

<http://www.millerquilts.com>

*Sign up Cut-off is December 31, 2009*

## April

Ellen Guerrant

4/7: L-Journey of a Quiltmaker

4/8: W-To be determined

Ellen is one of our own Guild members who is well known for her bright, contemporary quilts as well as those with more personal themes. Her work is mostly intuitive and often created from unusual thrift store fabrics, bits from her vintage textile collection or her hand dyes. Ellen says "I want my quilts to have a quality of being truly my own."

[www.ellenguerrant.com](http://www.ellenguerrant.com)

*Sign up Cut-off is February 28, 2010*

## May

Vikki Pignatelli

5/5: L-10 Attributes That Make A Good Quilter Better

5/6: W-Improvisational Curves

Vikki is author of Quilting By Improvisation and Quilting Curves. Follow Vikki as she leads you on an exciting journey through an array of quilting revelations. Discover surprisingly stress-free techniques to tame curves and sharp angles that anyone can master. Explore "no rules" improvisational methods to incorporate dimension and texture in your quilts.

<http://www.vikkipignatelli.com>

*Sign up Cut-off is February 28, 2010*

*Sign-up sheets for all speakers will now be available*

*at each meeting. **Remember you must pay when you sign up.** If you wish to register via mail, please send your*

*check to the Program Chair Patricia Sears at 1029*

*Peridot Drive, Fort Mill, SC 29708 rather than the Guild*

*post office box. Make the check out to the Charlotte*

*Quilters' Guild and annotate it with the name of the*

*workshop. You may reach Pat at [Sears6584@aol.com](mailto:Sears6584@aol.com) or*

*803 547-8206.*



# Calendar of Events

## **Oct 1 - 3, 2009**

“Timeless Treasures”

Maggie Valley, NC

Location: Maggie Valley Town Hall/Community Center  
Socco Road, (US 19) Maggie Valley, NC

Sponsor: High Country Quilters

Comments: 10AM-4PM, free admission. Come join us to celebrate the FALL COLORS in the Great Smoky Mountains. Our show is located in the most beautiful place in the fall, Maggie Valley, NC. We are just minutes down Socco Gap from the Blue Ridge Parkway and 45 minutes from the Great Smoky Mountains National Park and not far from Dollywood, Pigeon Forge, Gatlinburg and Sevierville, TN. See our quilts on display and then shop the best craft room you have ever seen featuring our fine local quilters and crafters. Many of our quilters sell their homemade crafts in local shops. Be sure to save some cash for our special vendor's room, featuring tons of fabric and notions, wonderful food and deserts, get your scissors sharpened, machines repaired and check out the great selection of treadle sewing machines.

Contact: Kay Ross, 828-926-4427

## **Oct 9-11, 2009**

Foothill Quilters Guild

In Stitches 2009 Quilt Show

Cleveland County Arts Council, Shelby

## **Oct 10, 2009**

Barnful of Quilts 2009

10AM-5PM

Fox Farms, Sims Road, Waxhaw, NC

Featured artist is Fletcher McNeil.

The event benefits Waxhaw Presbyterian Church

More Info: <http://www.foxfamilyfarm.com/>

## **Oct 16 - 18, 2009**

“Quilts of the Valley - Celebrating 25 Years of Quilting”

Hickory, NC

Location: The Hickory Metro Convention Center

Sponsor: Catawba Valley Quilters Guild

Hours: Friday and Saturday 9-5:00; Sunday 11-5:00

Comments: This show will feature more than 100 quilts on display along with vendors, boutique, door prizes, and free demonstrations. In addition, a beautiful hand-quilted sampler quilt will be given away.

Contact: Libby at (828) 324-6255 or librex@charter.net,

Subject: CVQG Show

## **Oct 23 - 24, 2009**

Quilts: Where Memories Live

Sanford, NC

Location: McSwain Agricultural Extension Center, 2420  
Tramway Road, Sanford, NC 27330

Sponsor: Hearts and Hands /ECA Quilt Guild

Comments: Hours 10:00 a.m. - 5:00 p.m. Sewing and Craft Boutique, Silent Auction Quilts, Antique Quilts, Raffle Baskets, Door Prizes, Raffle Quilt

Contact: Terri Sharpe 919-775-7760, email [uncquiltfan@gmail.com](mailto:uncquiltfan@gmail.com)

## **Oct 30 - 31, 2009**

“Sailing Under the Harvest Moon”

Mooresville, NC

Location: East Mooresville Intermediate School, 1711 East  
Landis Hwy, Mooresville, NC 28115

Sponsor: Lake Norman Quilters Guild

Hours: Friday and Saturday 10:00 AM to 5:00 PM

Comments: Over 200 quilts on display with a silent auction. Non-juried show with ribbons. “Three Cheers” Raffle Quilt -- tickets \$1.00 each. Lots of vendors. Free parking. Handicap Accessible.

Contact: Michele Sheets at [wcram97@bellsouth.net](mailto:wcram97@bellsouth.net)

## **Nov 7, 2009**

Ranlo Quilters Present: “A Pieciful Gathering” Quilt Show  
9AM-4PM

Fellowship Hall, Maylo United Methodist Church  
1900 Spencer Mnt Rd - Ranlo, Gastonia, NC

## **Nov 7, 2009**

“A Pieciful Gathering”

Gastonia, NC

Location: Fellowship Hall, Maylo United Methodist Church,  
1900 Spencer Mountain Rd - Ranlo

Sponsor: Ranlo Quilters

Hours: Saturday 9 AM to 4 PM

Comments: Includes vendors, members boutique and antique quilts.

Contact: Wanda Domin, 704-843-1225, [OSewMe2@aol.com](mailto:OSewMe2@aol.com)

## Charlotte Museum of History?

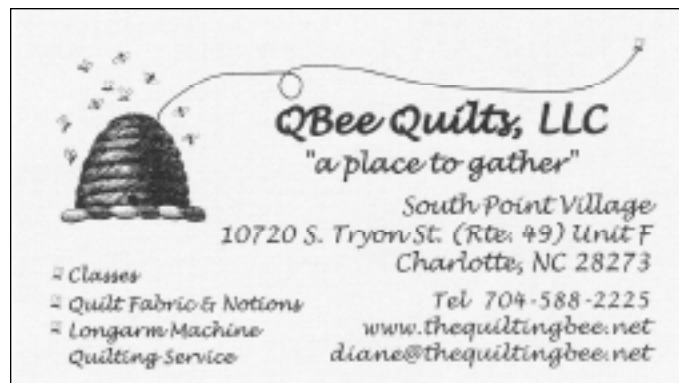
Just a reminder about the November 1st event at the Charlotte Museum of History.....Learn more about traditional textile production, and its development throughout the years. Historical demonstrators, vendors, and displays from local quilting and weaving organizations will be available to museum visitors. Bring in you own fabric heirlooms and learn from experts tips and tricks about how to preserve your very own treasures. Time is 1 to 4 on November 1st. A power point slide show of the museums wonderful quilt collection will be running. There are family activities and much more. See you at the Charlotte Museum of History!

Claudia Reynolds  
creyn4403@aol.com  
704-573-3170

The Charlotte Museum of History  
3500 Shamrock Drive  
Charlotte, NC 28215  
www.Charlottemuseum.org  
704-568-1774

## Symposium Committee Request

We are making a very classy notebook holder, designed by Grace Howes, as our handmade gift to give to all attendees and teachers at Symposium and would like to get all of us involved. So, I am asking that we **each bring a batik fat quarter with a design on it and a coordinating plain batik fat quarter to the October meeting.** The patterned one is for the outside of the notebook holder and will be quilted and the plain one is for the lining. Thanks so much for the help.  
Mary Phelps



## october birthdays

Claudette Bowden	10/2
Kim Deneault	10/4
Heidi Clark	10/6
Dorothy Nathansohn	10/6
Beth Stewart-Ozark	10/9
Beth Hayslett	10/12
Lora Vail	10/13
Debra McKenzie	10/14
Mary Quartapella	10/15
Debbie Rieck	10/15
Patti Hayden	10/17
Nancy Osterberg	10/17
Joyce Reid	10/17
Cary Caldwell	10/19
Andrea "Andy" Shipley	10/19
Linda Sirota	10/19
LaDona Bowling	10/22
Marsha Rich	10/28
Karen Wilson-McWhorter	10/28
Natalie Amalong	10/30
Susan Brubaker Knapp	10/31

“More than  
anything I must  
have flowers...  
always, always.”

-Claude Monet

## Volunteer Needed for Programs

A volunteer is needed to help Nancy Osterburg with programs for 2010.

All those interested please contact Nancy at [nko@bellsouth.net](mailto:nko@bellsouth.net)

## Blog of the Month

<http://www.cater-woods.com/weblog/>

## Dinner anyone?

Before each guild meeting several members meet at Jason's deli on Woodlawn for dinner.

All are welcome.

## Changing Lives



Presbyterian Behavioral Health offers both inpatient and outpatient services to children, adolescents and adults. Treatment options may include group, family and/or individual therapy. Psycho-educational groups include medication education, diagnosis education and coping skills.

Our programs provide treatment for a variety of conditions including:

Depression • Post-traumatic Stress  
Attention Deficit/Hyperactive Disorder  
Eating Disorders • Bipolar Disorder  
Psychosis • Anxiety Disorders

We accept Medicare, Medicaid and Most Third Party Insurers

**24-Hour ACCESS Line**  
800-786-1585 or 704-384-4255  
Fax: 704-384-9286

**Presbyterian BEHAVIORAL HEALTH**  
*Essential People. Essential Medicine.*

Presbyterian Hospital  
200 Hawthorne Lane • Charlotte, NC 28204  
704-384-CARE • [www.presbyterian.org](http://www.presbyterian.org)

# ..... Treasurer's Report .....

## Treasurer's Report Charlotte Quilter's Guild

August 31, 2009

Revenues:

**Beginning Balances:**

Operating Funds	25,502.99
Outreach Funds	6,083.07
Presidents Funds	2,376.53
Outreach CD	5,299.25

**Interest Income**

Operating funds	2.67
Outreach CD	1.80
Raffle Quilt 2009/2010	133.00
Membership Dues	2,870.00

**Expenses:**

Room rental for Sept workshop 3 days	300.00
Post Office Box rental for 09-10	96.00
Meet & Greet	18.32
Fee for August speaker	421.47

**Ending Balances:**

Operating Funds	27,672.25
Outreach Funds	6,083.59
Presidents Funds	2,376.63
Outreach CD	5,301.05

“Work like you don't need the money.  
Love like you've never been hurt.  
Dance like nobody's watching.”

Satchel Paige



# 2009 – 2010 BLOCK OF THE MONTH

Exploring The Underground Railroad Quilt Myth  
Charlotte Quilters' Guild

Block 3 – October 2009 - Shoofly Quilt Block

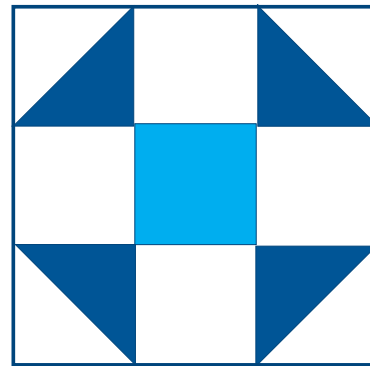


The Shoofly Quilt Block told them to dress up in cotton and satin bow ties.

From light background fabric, cut: four  $4\frac{1}{2}$ " squares and two  $4\frac{7}{8}$ " squares

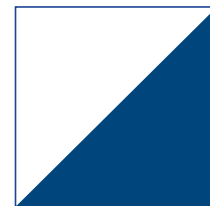
From medium or dark fabric, cut: one  $4\frac{1}{2}$ " square and two  $4\frac{7}{8}$ " squares

On the back (or wrong side) of the two  $4\frac{7}{8}$ " background squares, draw a diagonal line. As shown



Block Size: 12x12

Place one background square on top (right sides together) of a  $4\frac{7}{8}$ " star fabric square. With the background square on the top, sew a seam  $\frac{1}{4}$ " away from the drawn line. Sew another seam  $\frac{1}{4}$ " on the other side of the drawn line as shown below.

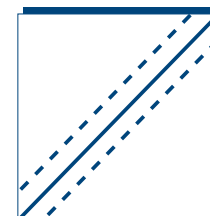


Now cut on the center line. Press seams toward the darker fabric. Repeat with another pair of the same fabrics.

Arrange units as shown in the diagram at the top of this page, and sew the top row together. Press seams toward the inside.

Sew the middle row together, pressing the rows toward the outside. Sew the third row together, pressing the seams toward the inside again.

Sew the rows together, making sure the seams meet and butt up against each other for a smooth join.



We will be creating the Blocks of the Month using Really Good Stuff Activity Guide "Underground Railroad Quilt Guide". This quilt poster and guide is packed with ideas for helping children study the Underground Railroad by learning about the quilts—and the secret escape codes quilters stitched into them to guide their people to freedom. The PDF for the Activity Guide can be found at: <http://www.reallygoodstuff.com/pdfs/154227.pdf>.

# ..... Member News .....



Photo shows Quilting Arts editor Pokey Bolton and Susan Brubaker Knapp on the set of Quilting Arts TV.

**Susan Brubaker Knapp** will be a guest on two episodes of Quilting Arts TV that will air this winter on PBS stations across the country. Susan also shot a Workshop DVD on free-motion machine quilting and thread sketching that will be available through Quilting Arts/Interweave later this fall. You can read all about her adventures filming the segments on her blog: [www.bluemoonriver.blogspot.com](http://www.bluemoonriver.blogspot.com)

## New Members

Please welcome these new member to the guild.

- Julie Armistead
- Linda Berry
- Jea Brown
- Penny Crowe
- Jean A. Keenan
- Elaine Kerr
- Sarah J. Lindberg
- Joan Nieves
- Marsha Rich

**Artists' Forum at The Mint Museum**

First Tuesdays, 7:00-8:30 pm (no program in January)  
Mint Museum of Art on Randolph | 2730 Randolph Road  
**FREE!**  
Area artists discuss their work as well as current issues and activities in their artistic fields.  
Co-presented with The Charlotte Chapter of the Linc, Inc. and the McColl Center for Visual Art.

Susan Brubaker Knapp Janet A. Lasher

**December 1 Susan Brubaker Knapp & Janet A. Lasher**  
Susan Brubaker Knapp's and Janet A. Lasher's award winning quilts have been exhibited at many national and international venues.

While **Susan Brubaker Knapp's** core materials – cloth and thread – are used in traditional quilting, she also employs substances such as fabric paints and dyes, Tyvek, Angelina fibers, and water-soluble wax pastels to transform the cloth. To learn more, please visit [bluemoonriver.com](http://bluemoonriver.com).

**Janet A. Lasher** combines printmaking, surface design and embellishment techniques into her two- and three-dimensional interpretive works. She finds inspiration from the world's culture, especially cultural icons and calligraphic forms. To learn more, please visit [janetlasher.com](http://janetlasher.com).

This program is being offered in conjunction with **American Quilt Classics, 1800-1980: The Bresler Collection** showing at the Mint Museum of Craft + Design through February 6, 2010.

Contact: Alison Taylor, Adult Program Coordinator, 704.377.2812 or e-mail [ataylor@mintmuseum.org](mailto:ataylor@mintmuseum.org) for further information.

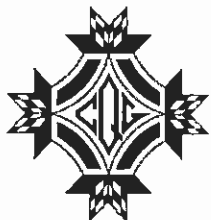
The Mint Museum is funded, in part, with operating support from the Arts & Science Council of Charlotte-Mecklenburg, Inc.; the North Carolina Arts Council, an agency funded by the State of North Carolina and the National Endowment for the Arts; the City of Charlotte; and their members.

On December 1, **Susan Brubaker Knapp and Janet A. Lasher** will be guest speakers at The Mint Museum <http://mintmuseum.org/> Artists' Forum. These events are designed to give area artists a platform to discuss their work as well as current issues and activities in their artistic fields.

The forum is being held in conjunction with American Quilt Classics, 1800-1980: The Bresler Collection <http://www.mintmuseum.org/exhibitions.html>, showing at the Mint Museum of Craft + Design now through February 6, 2010. The collection includes spectacular examples of Baltimore Album quilts, crazy quilts, Chintz pictorial quilts, Amish quilts and log cabin quilts.

### DETAILS:

Tuesday, Dec. 1  
7 to 8:30 p.m.  
Mint Museum of Art  
2730 Randolph Road, Charlotte NC  
Cost: free



# Charlotte Quilters' Guild Membership for 2009-2010

P.O. Box 221035 Charlotte, NC 28222

<b>RENEWAL DUES FOR EXISTING MEMBERS IS \$35.00</b>	
<b>FOR NEW MEMBERS ONLY, MEMBERSHIP DUES ARE PRORATED:</b>	
<b>If you join:</b>	<b>First year dues are:</b>
September through December	\$35.00
January through March	\$26.25
April through May	\$17.50
June through August	\$ 8.75

Dues and this application may be hand delivered at the Guild meeting or mailed to the above address.

**Please make your check payable to: Charlotte Quilters' Guild**

Date: \_\_\_\_\_ New Member  Renewal  Please check box below if info has changed since last Guild Directory.

Name: \_\_\_\_\_

Street Address: \_\_\_\_\_

City, State and Zip Code: \_\_\_\_\_

Telephone: (Home) \_\_\_\_\_

(Cell) \_\_\_\_\_

E-mail Address: \_\_\_\_\_

Birthday (month) \_\_\_\_\_ (day) \_\_\_\_\_

<b>FOR OFFICIAL USE ONLY</b>	
Payment method:	Check <input type="checkbox"/> Ck. No. _____ Amount _____
	Cash <input type="checkbox"/> Amount _____

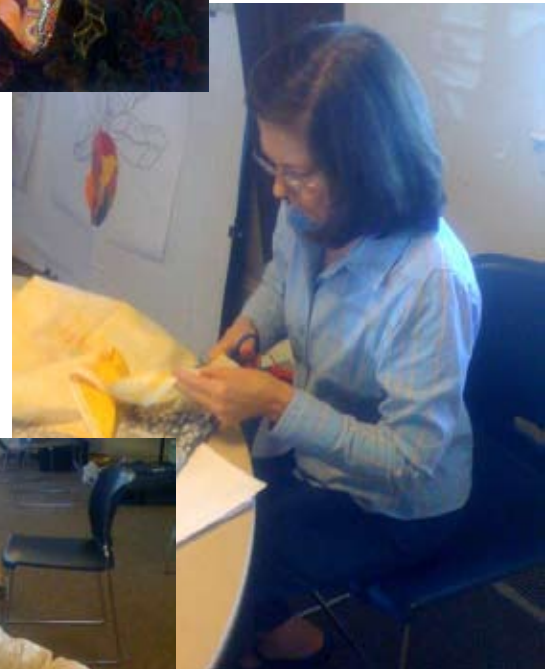
revised 7/2009

# JUMPSTART YOUR CREATIVITY

with Barbara Olson



Barbara's wild orchid for inspiration.



hard at work....



hard at work....



orchid in progress...

*Commit to never-ending improvement -Barbara Olson*